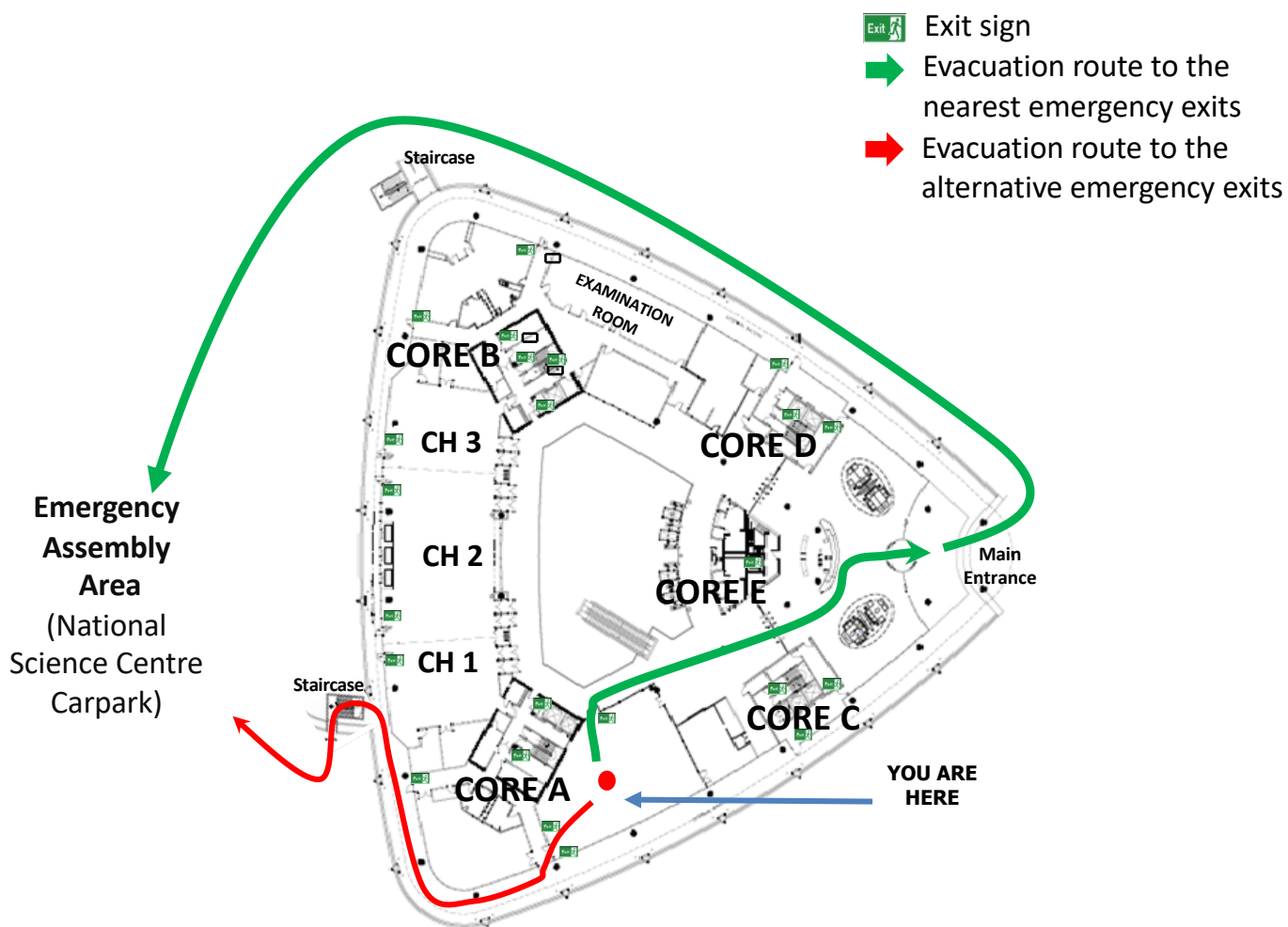


In Case of Emergency

Evacuation Route

(IOSCO Office, Ground Floor)



EVACUATION

- Upon hearing the fire alarm, wait for further instructions before commencing to leave the building.
- Once the instruction is given for evacuation, collect only essential items.
- Do not use the lifts. Proceed to the nearest exit and make your way out.
- If the nearest exit is inaccessible, then move to the other alternative exits.
- Make your way to the emergency assembly area located at the open carpark of the National Science Centre.

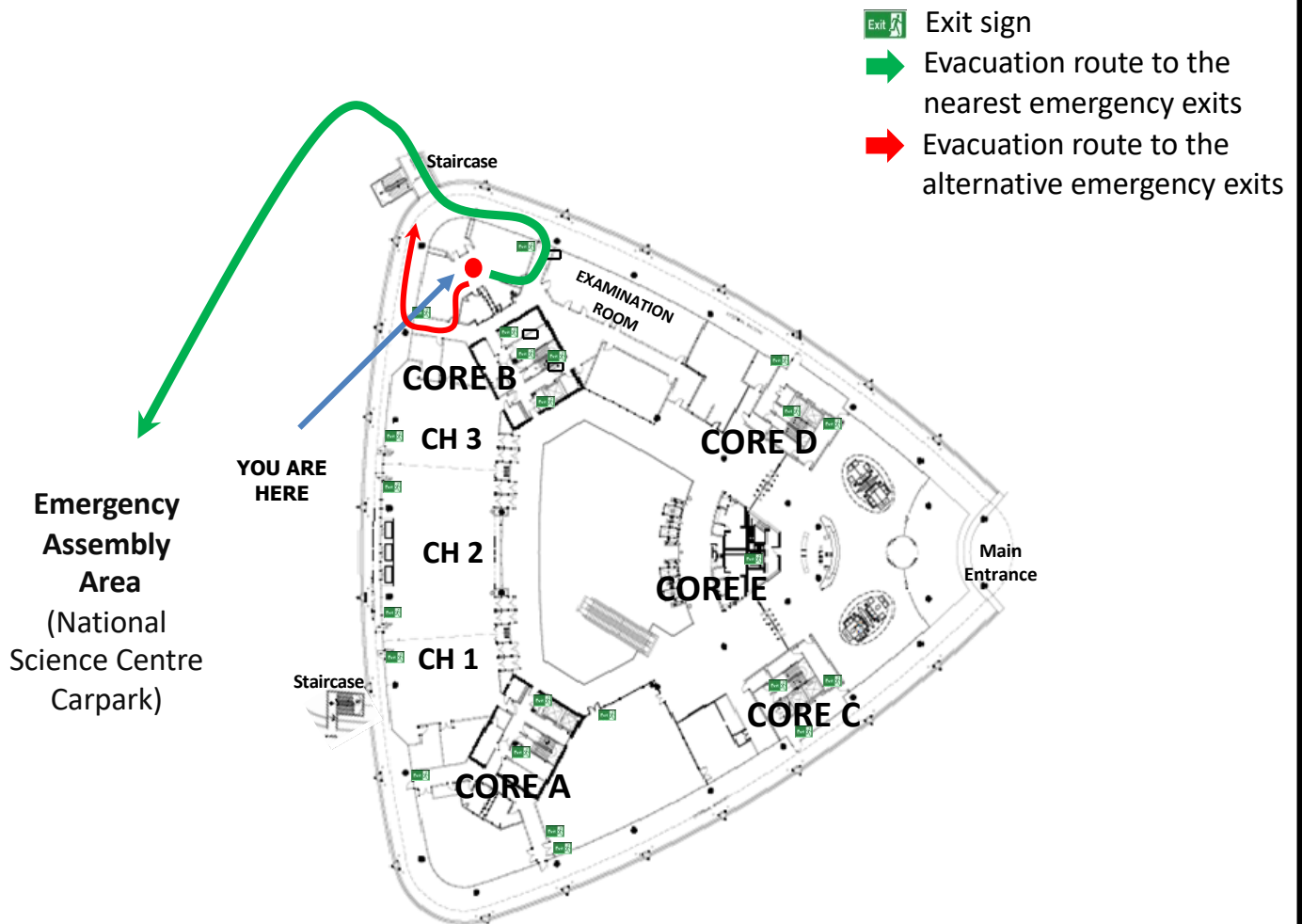
ALERT

- If you notice any incident that may threaten yours and your colleagues' well-being, please call the SC Hotline immediately at 03-62048886/8887.
- Remain calm, state your full name and location, describe the emergency, and follow the instructions from the SC Hotline.

In Case of Emergency

Evacuation Route

(Publication Unit, Ground Floor)



EVACUATION

- Upon hearing the fire alarm, wait for further instructions before commencing to leave the building.
- Once the instruction is given for evacuation, collect only essential items.
- Do not use the lifts. Proceed to the nearest exit and make your way out.
- If the nearest exit is inaccessible, then move to the other alternative exits.
- Make your way to the emergency assembly area located at the open carpark of the National Science Centre.




ALERT

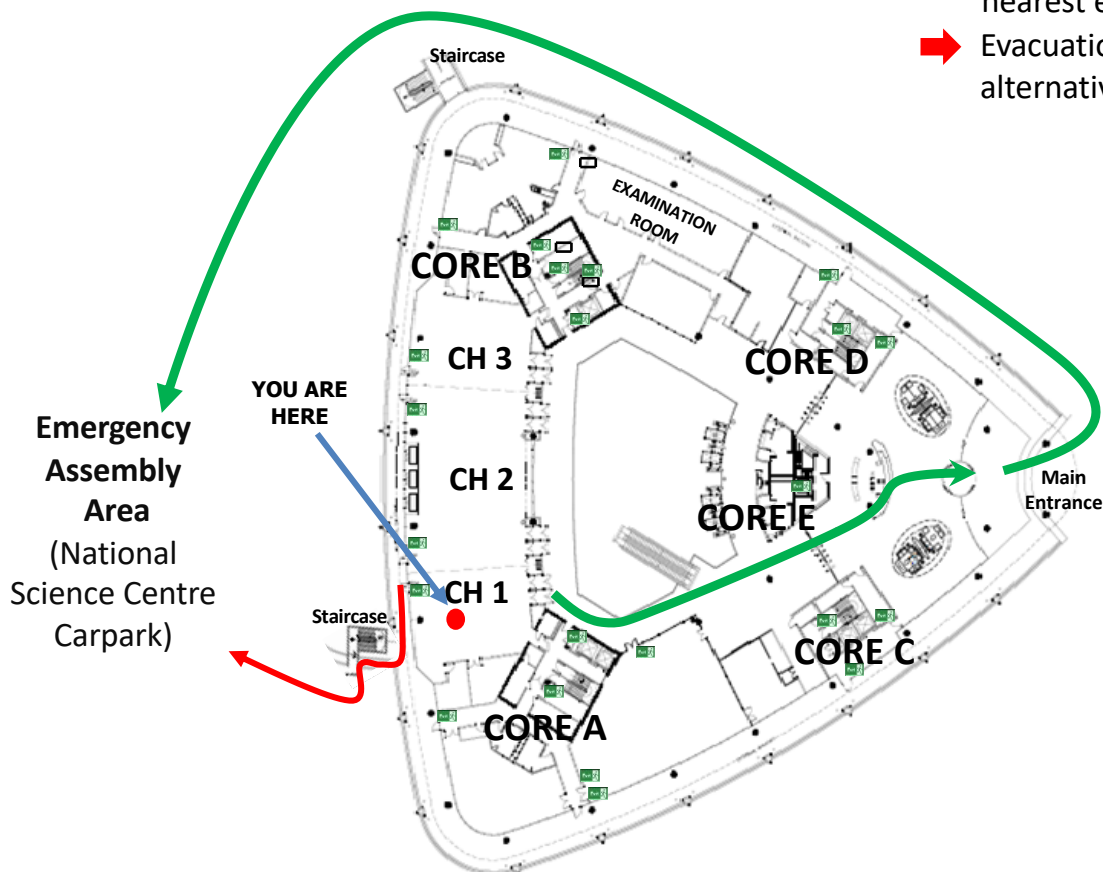
- If you notice any incident that may threaten yours and your colleagues' well-being, please call the SC Hotline immediately at 03-62048886/8887.
- Remain calm, state your full name and location, describe the emergency, and follow the instructions from the SC Hotline.

In Case of Emergency

Evacuation Route

(Conference Hall 1, Ground Floor)

-  Exit sign
-  Evacuation route to the nearest emergency exits
-  Evacuation route to the alternative emergency exits



EVACUATION

- Upon hearing the fire alarm, wait for further instructions before commencing to leave the building.
- Once the instruction is given for evacuation, collect only essential items.
- Do not use the lifts. Proceed to the nearest exit and make your way out.
- If the nearest exit is inaccessible, then move to the other alternative exits.
- Make your way to the emergency assembly area located at the open carpark of the National Science Centre.




ALERT

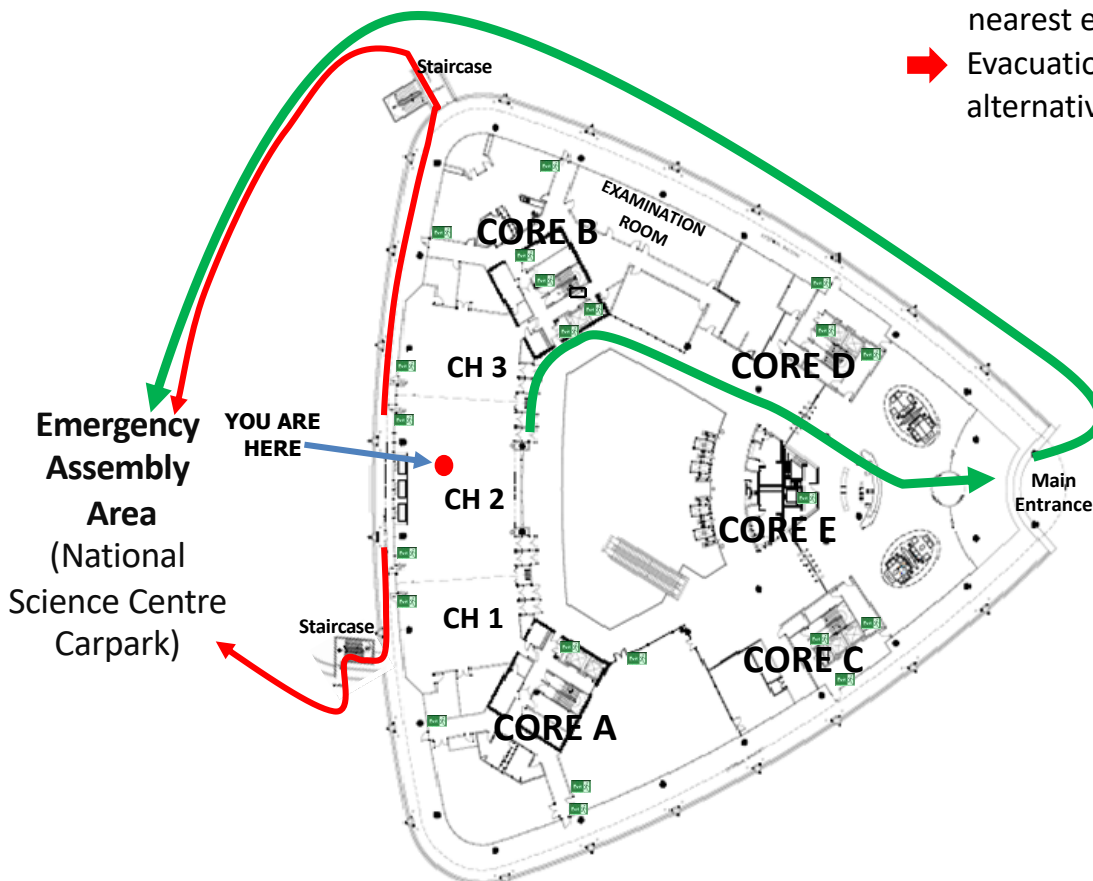
- If you notice any incident that may threaten yours and your colleagues' well-being, please call the SC Hotline immediately at 03-62048886/8887.
- Remain calm, state your full name and location, describe the emergency, and follow the instructions from the SC Hotline.

In Case of Emergency

Evacuation Route

(Conference Hall 2, Ground Floor)

-  Exit sign
-  Evacuation route to the nearest emergency exits
-  Evacuation route to the alternative emergency exits



EVACUATION

- Upon hearing the fire alarm, wait for further instructions before commencing to leave the building.
- Once the instruction is given for evacuation, collect only essential items.
- Do not use the lifts. Proceed to the nearest exit and make your way out.
- If the nearest exit is inaccessible, then move to the other alternative exits.
- Make your way to the emergency assembly area located at the open carpark of the National Science Centre.




ALERT

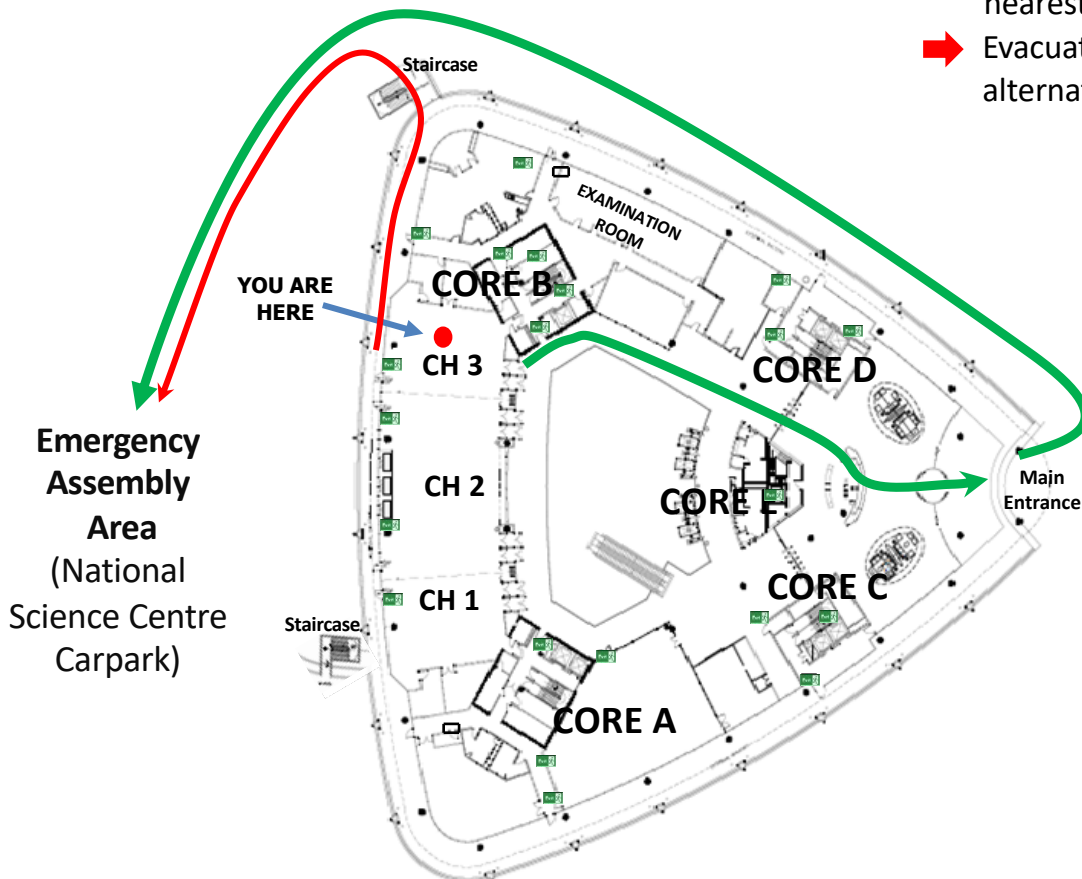
- If you notice any incident that may threaten yours and your colleagues' well-being, please call the SC Hotline immediately at 03-62048886/8887.
- Remain calm, state your full name and location, describe the emergency, and follow the instructions from the SC Hotline.

In Case of Emergency

Evacuation Route

(Conference Hall 3, Ground Floor)

-  Exit sign
-  Evacuation route to the nearest emergency exits
-  Evacuation route to the alternative emergency exits



EVACUATION

- Upon hearing the fire alarm, wait for further instructions before commencing to leave the building.
- Once the instruction is given for evacuation, collect only essential items.
- Do not use the lifts. Proceed to the nearest exit and make your way out.
- If the nearest exit is inaccessible, then move to the other alternative exits.
- Make your way to the emergency assembly area located at the open carpark of the National Science Centre.

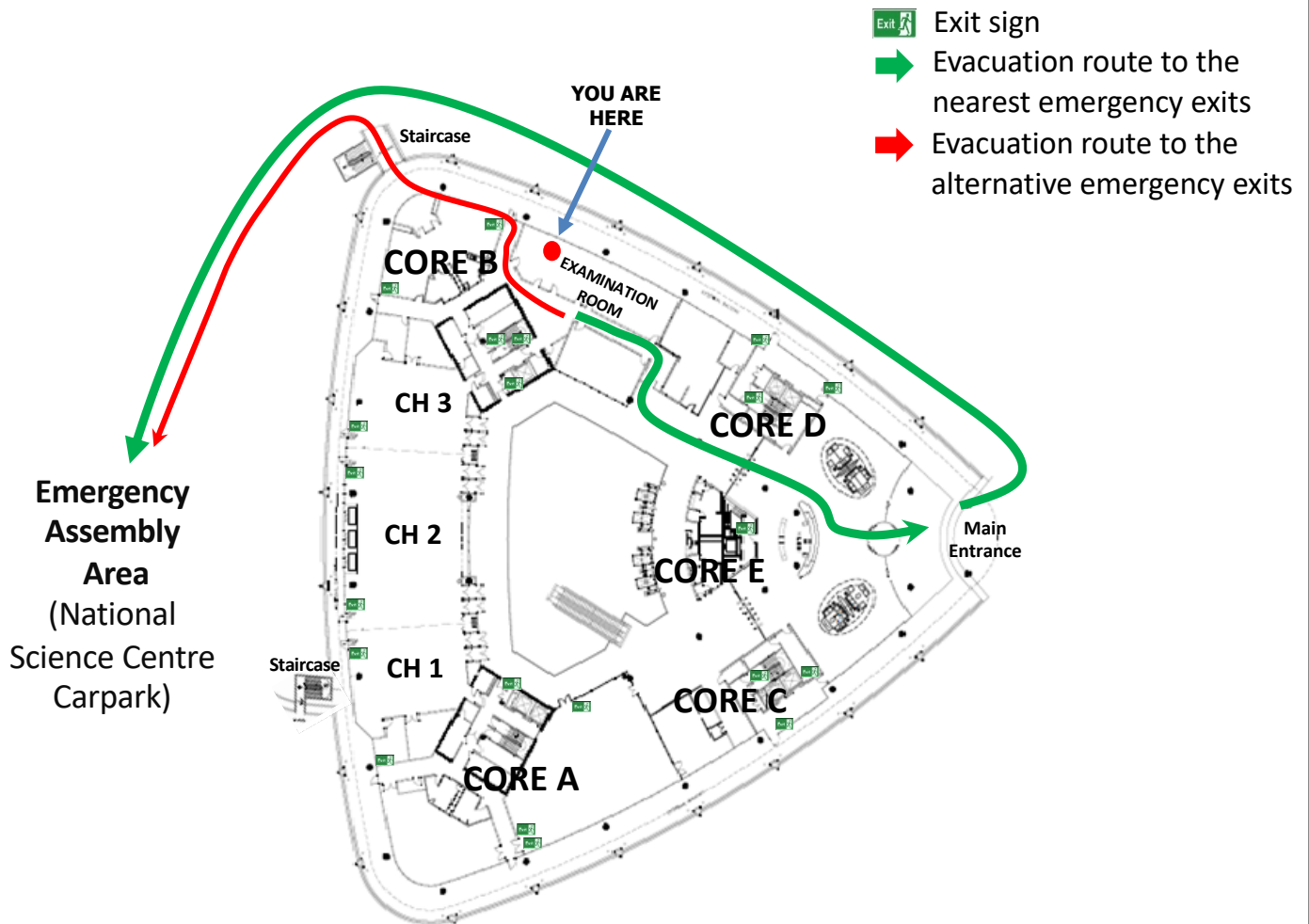
ALERT

- If you notice any incident that may threaten yours and your colleagues' well-being, please call the SC Hotline immediately at 03-62048886/8887.
- Remain calm, state your full name and location, describe the emergency, and follow the instructions from the SC Hotline.

In Case of Emergency

Evacuation Route

(Examination Room, Ground Floor)



EVACUATION

- Upon hearing the fire alarm, wait for further instructions before commencing to leave the building.
- Once the instruction is given for evacuation, collect only essential items.
- Do not use the lifts. Proceed to the nearest exit and make your way out.
- If the nearest exit is inaccessible, then move to the other alternative exits.
- Make your way to the emergency assembly area located at the open carpark of the National Science Centre.

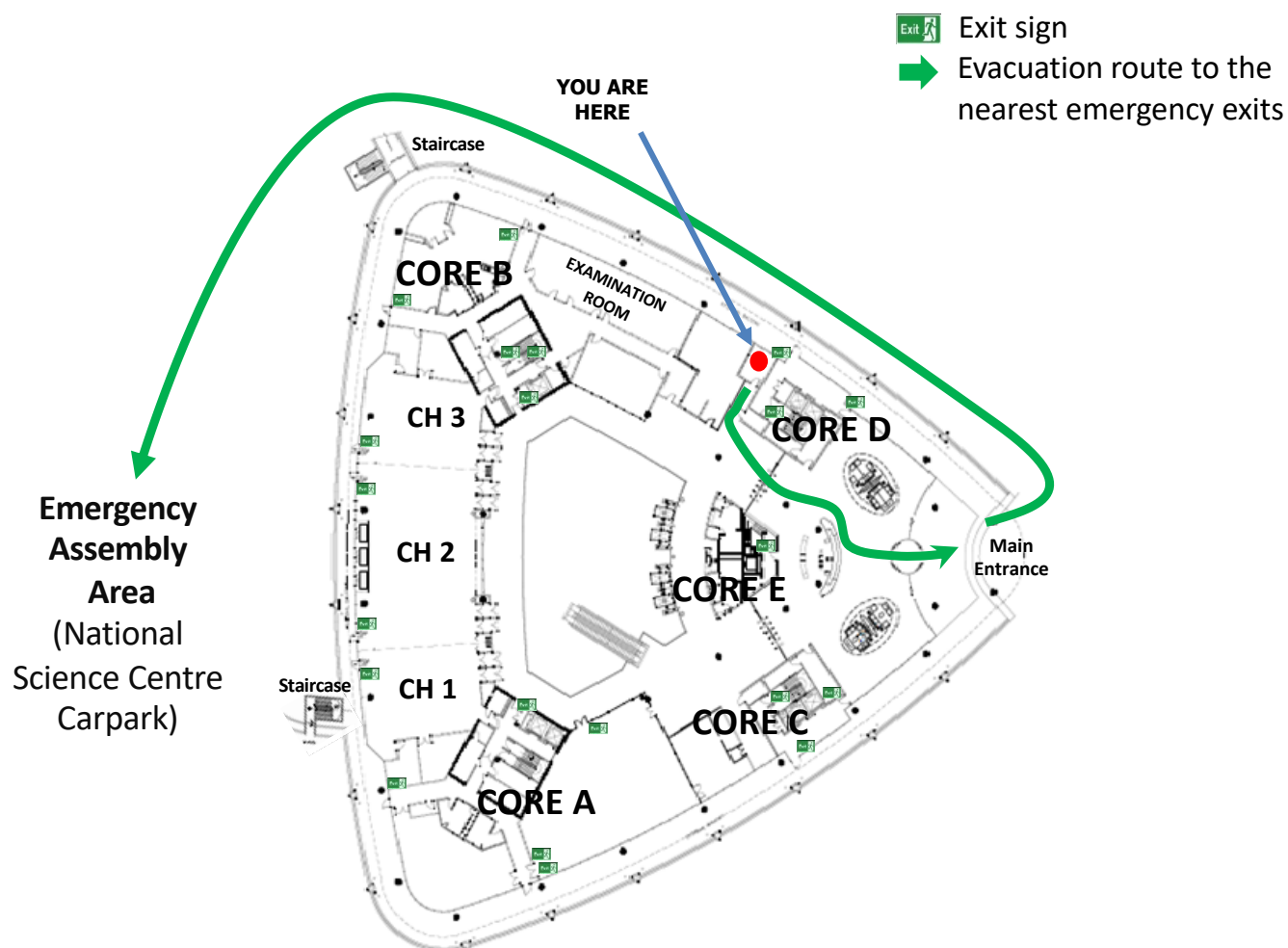
ALERT

- If you notice any incident that may threaten yours and your colleagues' well-being, please call the SC Hotline immediately at 03-62048886/8887.
- Remain calm, state your full name and location, describe the emergency, and follow the instructions from the SC Hotline.

In Case of Emergency

Evacuation Route

(Complainant & Frisking Room , Ground Floor)



EVACUATION

- Upon hearing the fire alarm, wait for further instructions before commencing to leave the building.
- Once the instruction is given for evacuation, collect only essential items.
- Do not use the lifts. Proceed to the nearest exit and make your way out.
- If the nearest exit is inaccessible, then move to the other alternative exits.
- Make your way to the emergency assembly area located at the open carpark of the National Science Centre.

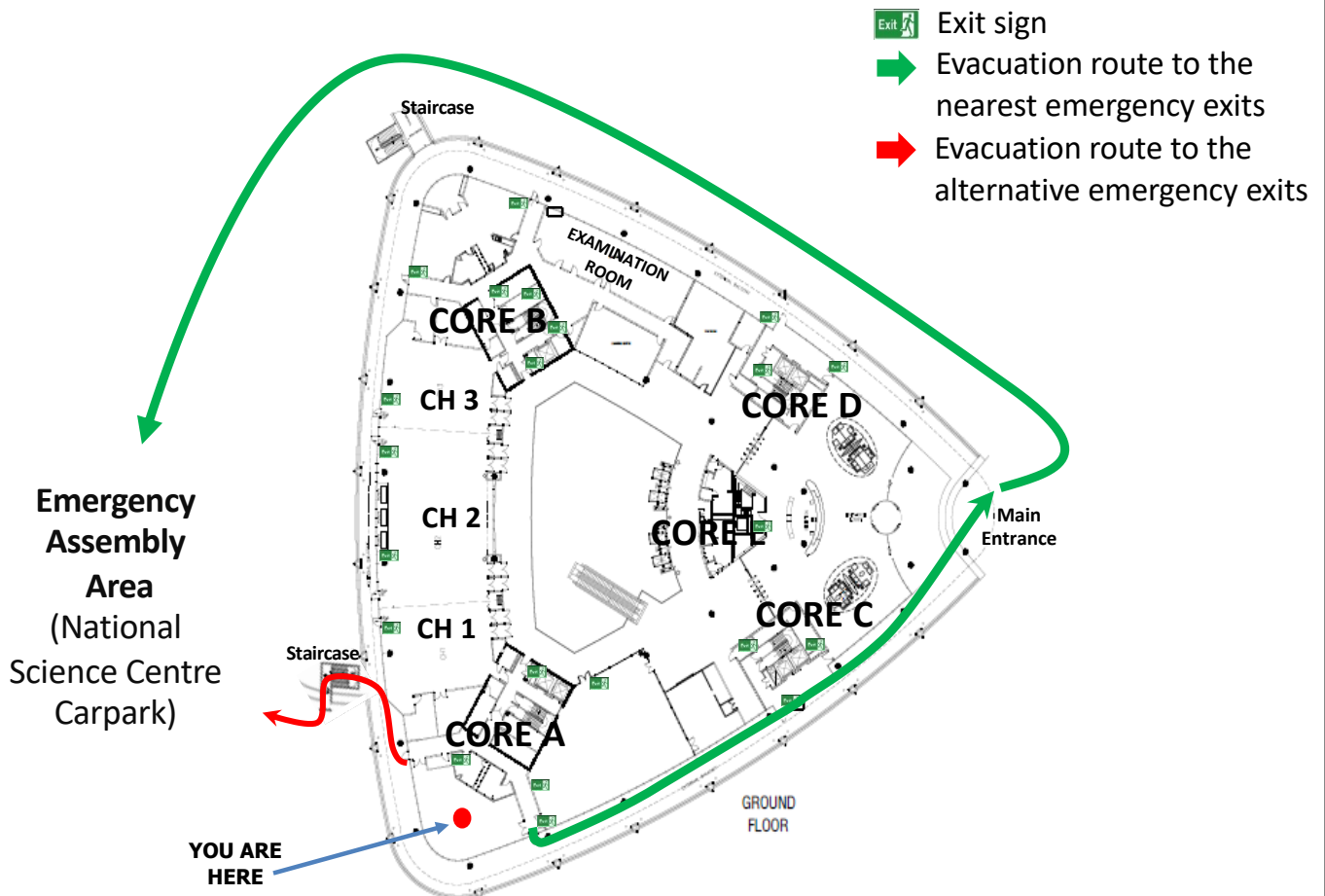
ALERT

- If you notice any incident that may threaten yours and your colleagues' well-being, please call the SC Hotline immediately at 03-62048886/8887.
- Remain calm, state your full name and location, describe the emergency, and follow the instructions from the SC Hotline.

In Case of Emergency

Evacuation Route

(Coffee Pavilion, Ground Floor)



EVACUATION

- Upon hearing the fire alarm, wait for further instructions before commencing to leave the building.
- Once the instruction is given for evacuation, collect only essential items.
- Do not use the lifts. Proceed to the nearest exit and make your way out.
- If the nearest exit is inaccessible, then move to the other alternative exits.
- Make your way to the emergency assembly area located at the open carpark of the National Science Centre.

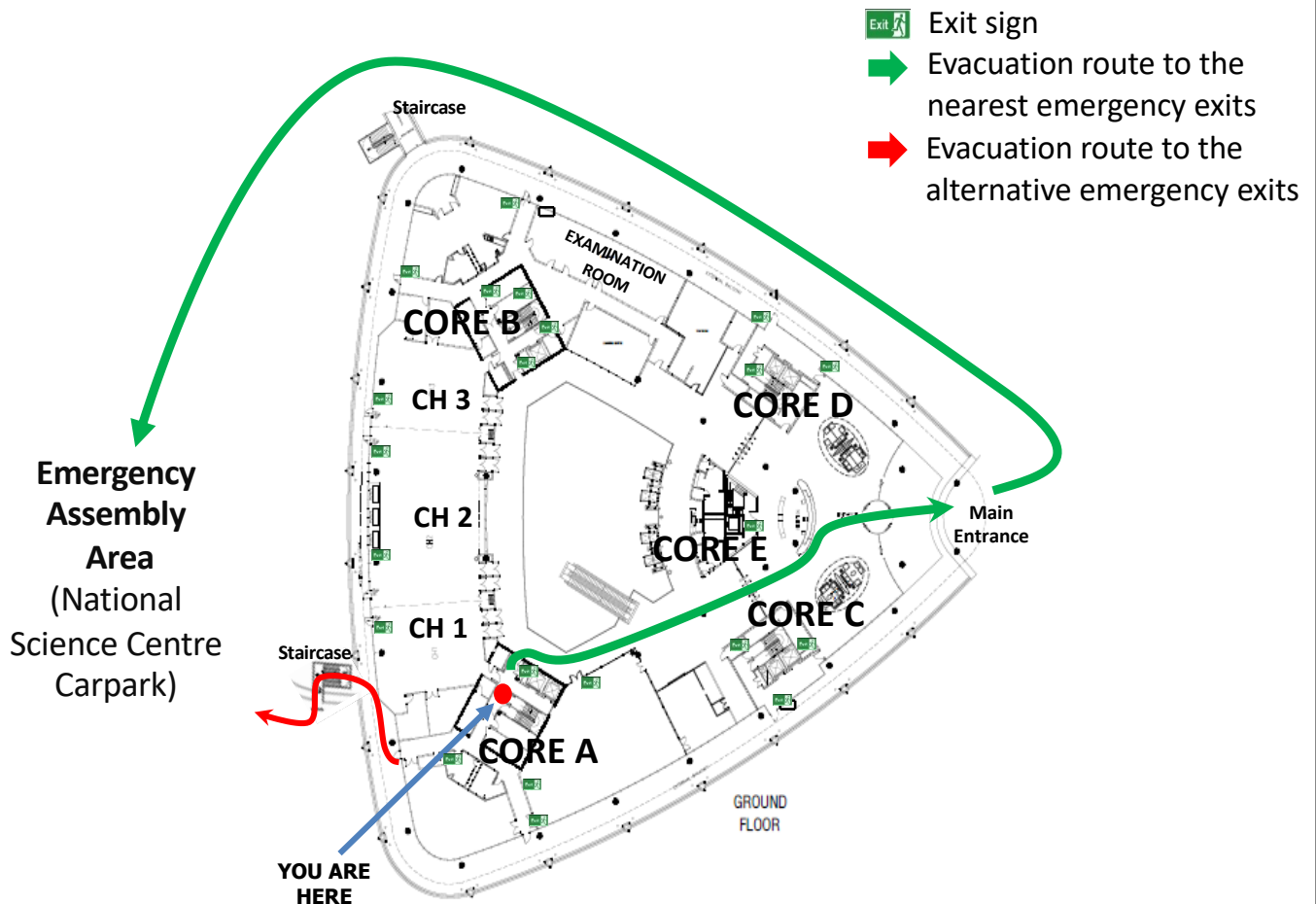
ALERT

- If you notice any incident that may threaten yours and your colleagues' well-being, please call the SC Hotline immediately at 03-62048886/8887.
- Remain calm, state your full name and location, describe the emergency, and follow the instructions from the SC Hotline.

In Case of Emergency

Evacuation Route

(Lift Lobby, Core A, Ground Floor)



EVACUATION

- Upon hearing the fire alarm, wait for further instructions before commencing to leave the building.
- Once the instruction is given for evacuation, collect only essential items.
- Do not use the lifts. Proceed to the nearest exit and make your way out.
- If the nearest exit is inaccessible, then move to the other alternative exits.
- Make your way to the emergency assembly area located at the open carpark of the National Science Centre.

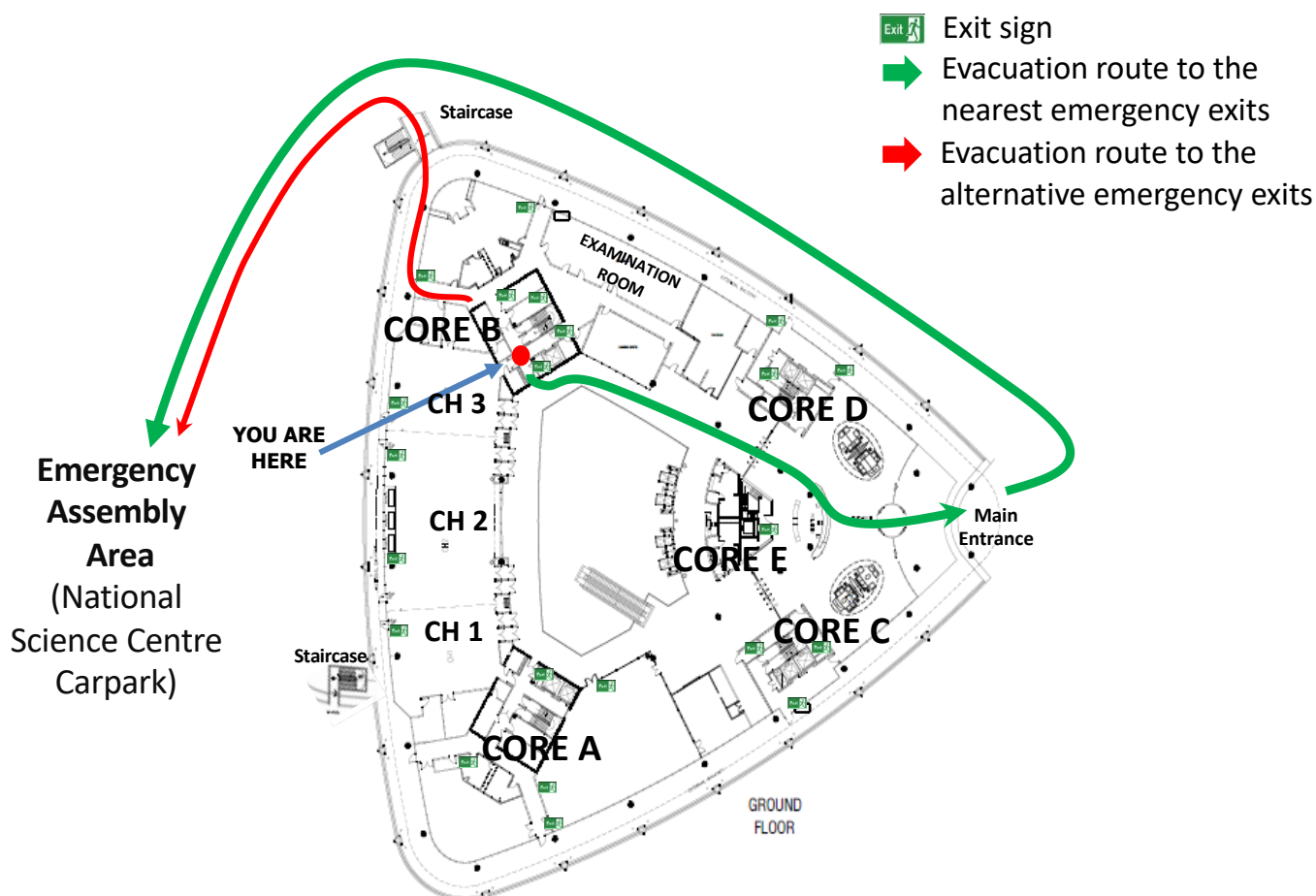
ALERT

- If you notice any incident that may threaten yours and your colleagues' well-being, please call the SC Hotline immediately at 03-62048886/8887.
- Remain calm, state your full name and location, describe the emergency, and follow the instructions from the SC Hotline.

In Case of Emergency

Evacuation Route

(Lift Lobby, Core B, Ground Floor)



EVACUATION

- Upon hearing the fire alarm, wait for further instructions before commencing to leave the building.
- Once the instruction is given for evacuation, collect only essential items.
- Do not use the lifts. Proceed to the nearest exit and make your way out.
- If the nearest exit is inaccessible, then move to the other alternative exits.
- Make your way to the emergency assembly area located at the open carpark of the National Science Centre.

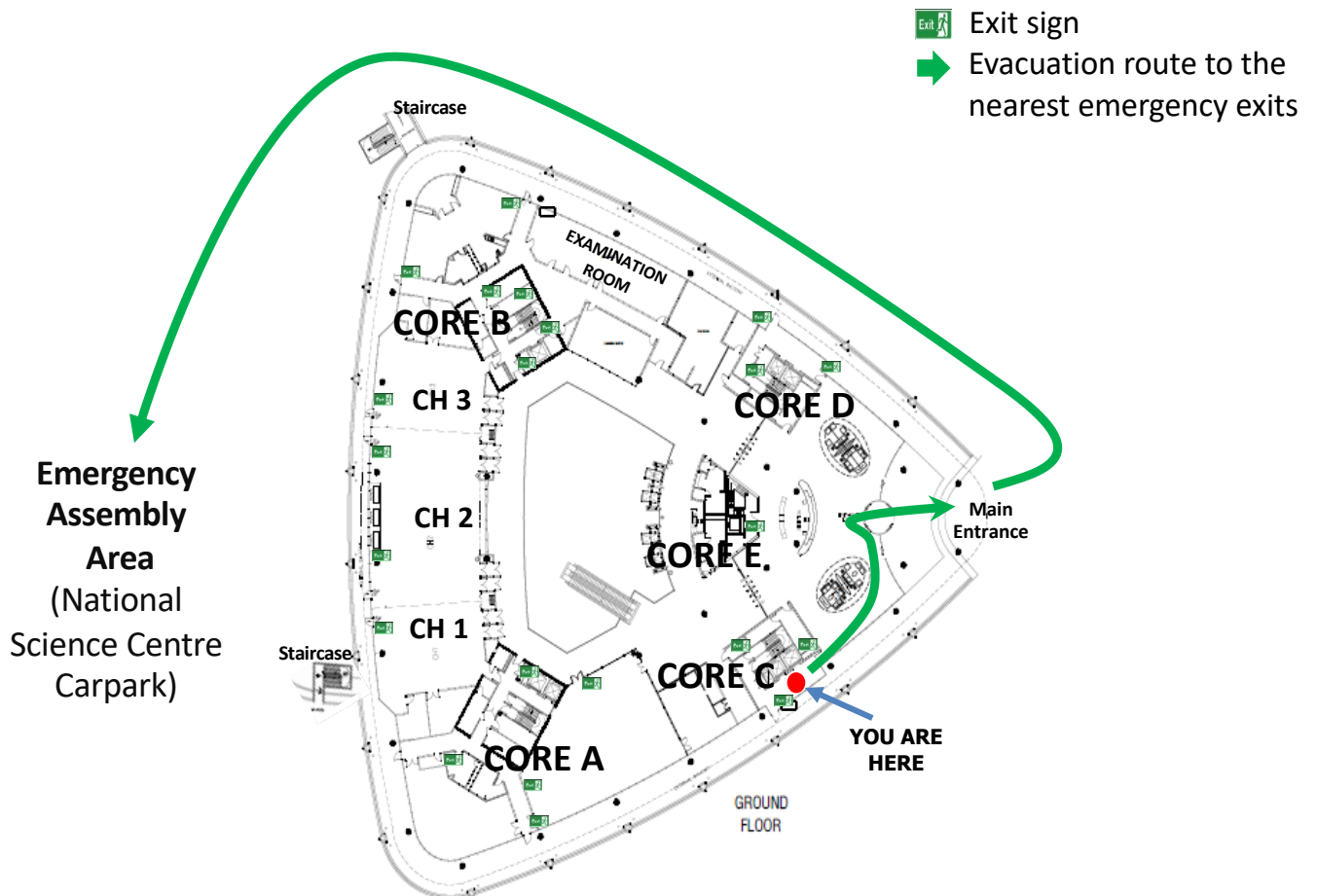
ALERT

- If you notice any incident that may threaten yours and your colleagues' well-being, please call the SC Hotline immediately at 03-62048886/8887.
- Remain calm, state your full name and location, describe the emergency, and follow the instructions from the SC Hotline.

In Case of Emergency

Evacuation Route

(Lift Lobby, Core C, Ground Floor)



EVACUATION

- Upon hearing the fire alarm, wait for further instructions before commencing to leave the building.
- Once the instruction is given for evacuation, collect only essential items.
- Do not use the lifts. Proceed to the nearest exit and make your way out.
- If the nearest exit is inaccessible, then move to the other alternative exits.
- Make your way to the emergency assembly area located at the open carpark of the National Science Centre.



ALERT

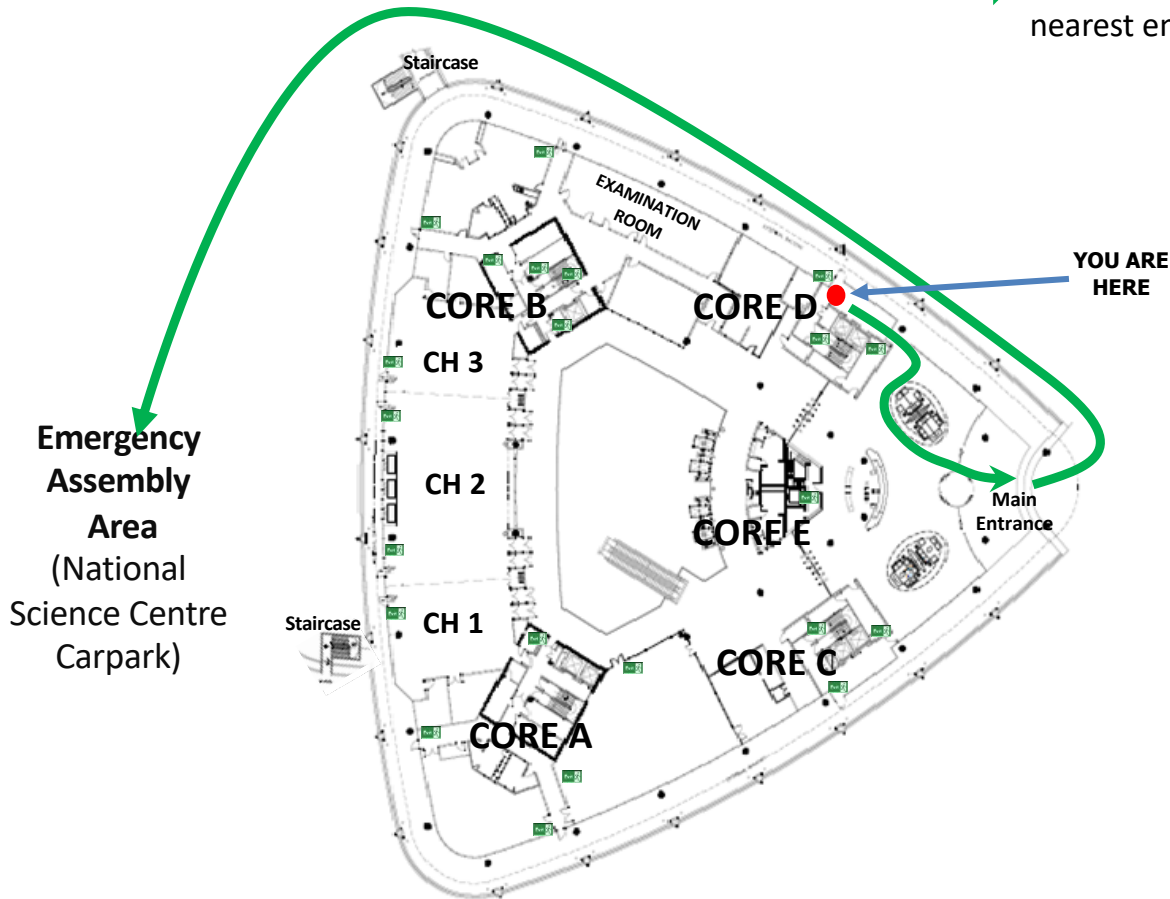
- If you notice any incident that may threaten yours and your colleagues' well-being, please call the SC Hotline immediately at 03-62048886/8887.
- Remain calm, state your full name and location, describe the emergency, and follow the instructions from the SC Hotline.

In Case of Emergency

Evacuation Route

(Lift Lobby, Core D, Ground Floor)

-  Exit sign
-  Evacuation route to the nearest emergency exits



EVACUATION

- Upon hearing the fire alarm, wait for further instructions before commencing to leave the building.
- Once the instruction is given for evacuation, collect only essential items.
- Do not use the lifts. Proceed to the nearest exit and make your way out.
- If the nearest exit is inaccessible, then move to the other alternative exits.
- Make your way to the emergency assembly area located at the open carpark of the National Science Centre.

ALERT

- If you notice any incident that may threaten yours and your colleagues' well-being, please call the SC Hotline immediately at 03-62048886/8887.
- Remain calm, state your full name and location, describe the emergency, and follow the instructions from the SC Hotline.